

Sizes: Su07, 07, 10 (60-holes)
up to 720 capsules/hour*

Size: 11 (70-holes)
up to 840 capsules/hour*

Sizes: 12el, 12, 13 (120-holes)
up to 840 capsules/hour*

Sizes: 32150, 35110 (50-holes)
up to 500 capsules/hour*



Watch video at www.torpac.com/vcf

**For manufacturers a low-cost method to fill capsules for test-markets.
For veterinary clinics a quick and easy way to fill capsules.**

- Simple to operate, see video at www.torpac.com/vcf.
- Fills multiple capsules in one cycle. Manual orientation, separation & locking of capsules is required.
- Fill weights for individual capsules are within $\pm 5\%$ of average.
- Filler base includes base frame and 2 powder spreaders.
- Filler Change Parts include 2 filler plates and upper & lower spacers for size group.
- Easy to clean.
- Made from acrylic, nylon and Inox (stainless steel 316).
- Optional Tamper available as special order.



ProFill^{Vet}

Entry-level for R&D trials & clinics. Individually orient capsules. Use Filler to Separate, Fill, Tamp & Lock Capsules.

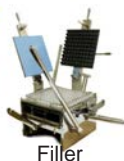
Sizes: Su7/7/10, 11, 12el/12/13
Output: 400+ Capsules/hour*



AFV - Fully Automatic

Under Development.
Approximately 4-12 million capsule a year on 1 shift.

Sizes: Su7, 7, 10, 11, 12el, 12, 13
Output: 2500 - 7500 Capsules/hour*



Capsule Veterinary System 2G

A bench-top system for regular production use. Approximately 3-5 million a year on 1 shift.

Sizes: Su7, 7, 10, 11, 12el, 12, 13
Output: 1000 - 2400 Capsules/hour*



ProMixer™ 10L

ProMixer Tumble Blender for mixing up to 10L (10 US Quart) of powder using V-Shell or Drum Shells. Typical mixing time 5-15 minutes based on % of air volume used and powders. Mixer & Shells made from Inox (Stainless Steel 316).

*Output based on powder, operator speed & number of taps/tamps.

Custom Dosing Applicator

Designed & Manufactured by:

TORPAC®

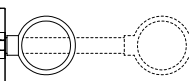
www.torpac.com
info37@torpac.com

US - T: +1-973-244-1125
333 US 46, Fairfield, NJ 07004, USA

EU - T: +31-6-30-93-65-27
Jan Campertstraat 19, 6416 SG Heerlen,
The Netherlands.

VCF Brochure 2205 USG0




Your Logo Here



Available laser marked in black or embossed with your logo and product name.
For use with sizes: 12el, 12, 13

Size Su07-13 Capsules

These sizes use a common Filler Base. Order Change Parts for capsules sizes you want to fill.

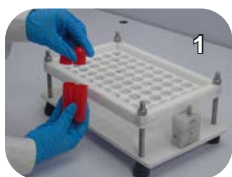
Item Description	Capsule Size	Item #	US\$	
Filler Base Kit Su07-13 (requires Change Parts) Base Kit includes: 1 Bottom Plate, 4 rubber feet, 4 Locating Pins, 4 Nuts, 2 Spacer Pins, 2 Upper Spacers & 2 Powder Spreaders (not shown in photo). Base Kit Su07-13 requires Change Part Set, see below.		Base Kit Su07 - 13	XV-VCF FB	\$220
Change Parts Set Change Parts Set includes: 1 Top plate & 2 Lower Spacers common for an entire Size Group excepting 12el/12/13. Change Parts for sizes 12/12el/13 include a Top Plate and Lower spacers for 12el & 12. ^a Size 13 requires unique Upper & Lower Spacers ordered separately for \$80. (XV-VCF FS 13) Required for use with Filler Base Kit Su07-13.		Size Group Su07, 7, 10	XV-VCF FCP A	\$450
		11	XV-VCF FCP B	\$375
		12el, 12, 13 ^a	XV-VCF FCP C	\$450
Tampers (optional) Optional Tampers to compress powder for increased fill weights & faster filling.		Su07, 07, 10	XV-VCF TMP A	\$190
		11	XV-VCF TMP B	\$200
		12el, 12, 13	XV-VCF TMP C	\$205

Size 32150 & 35110 Capsules

These sizes use a common Filler Base and are Matched with Charge Parts for a Size Group.

Item Description	Capsule Size	Item #	US\$	
Filling Machine (Complete) The only filling system for Torpac King Size veterinary capsules. Includes 1 full system for either size 32150 or 35110.		32150	XV-VCF 32150	\$605
		35110	XV-VCF 35110	\$605

Operating Overview



Separate Capsules



Insert Capsule Bodies



Pour Pre-measured Powder



Spread Powder



Tap or Tamp Powder



Spread remaining Powder



Rotate Upper Spacer



Replace Capsule Caps



Capsules are Filled & Locked

See Users Manual or Video for more Information at www.torpac.com/vcf